

FIG. 1

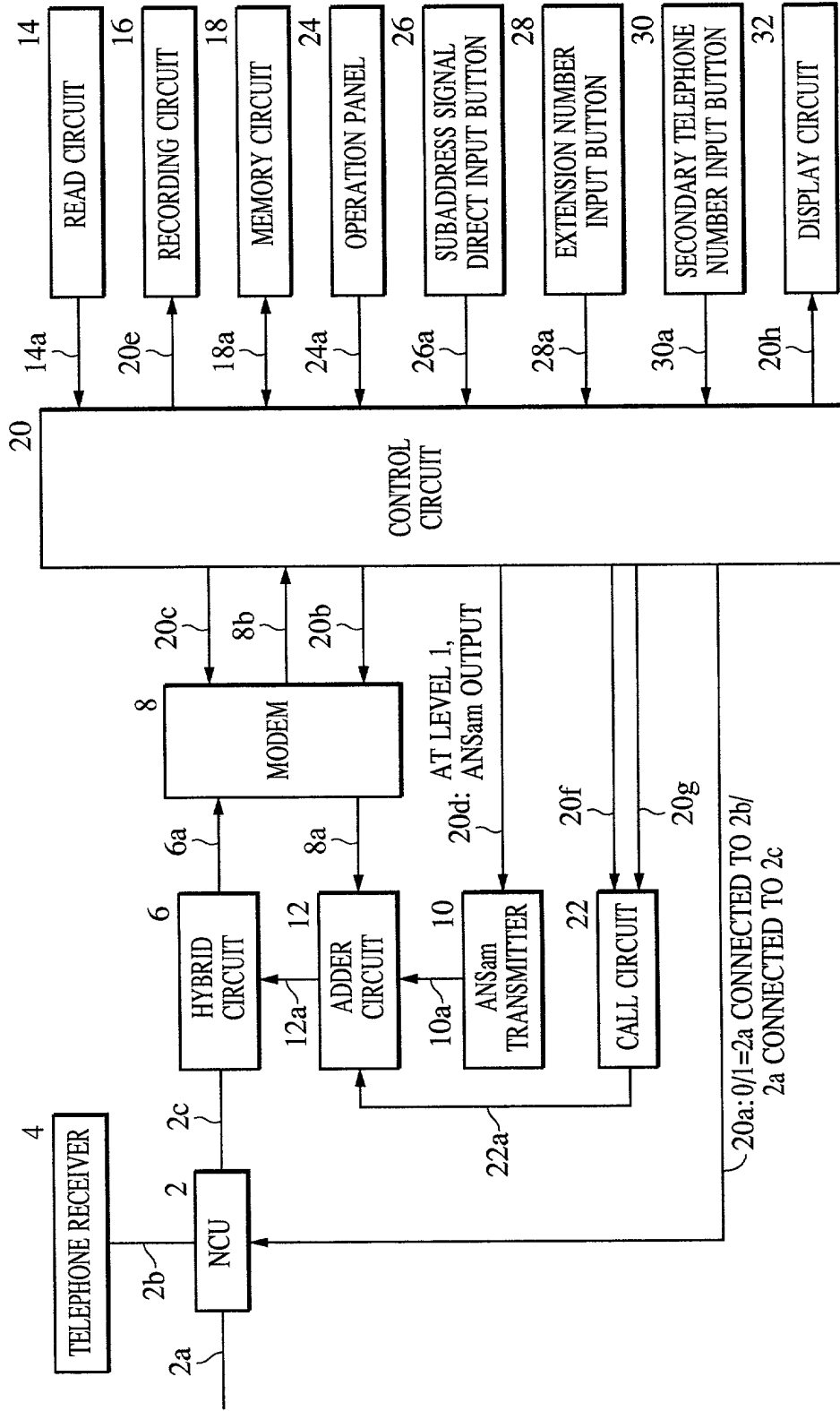


FIG. 2

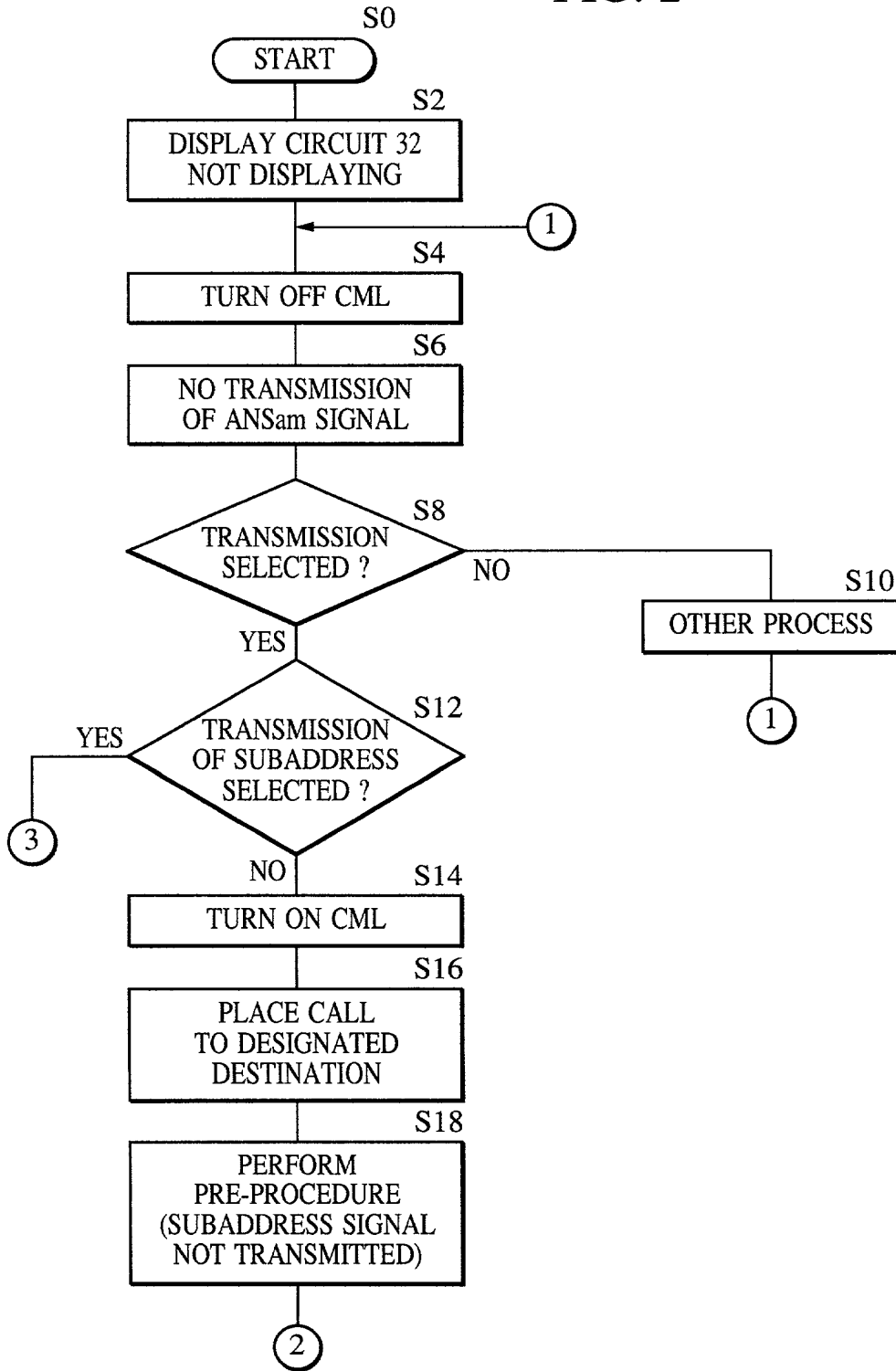


FIG. 3

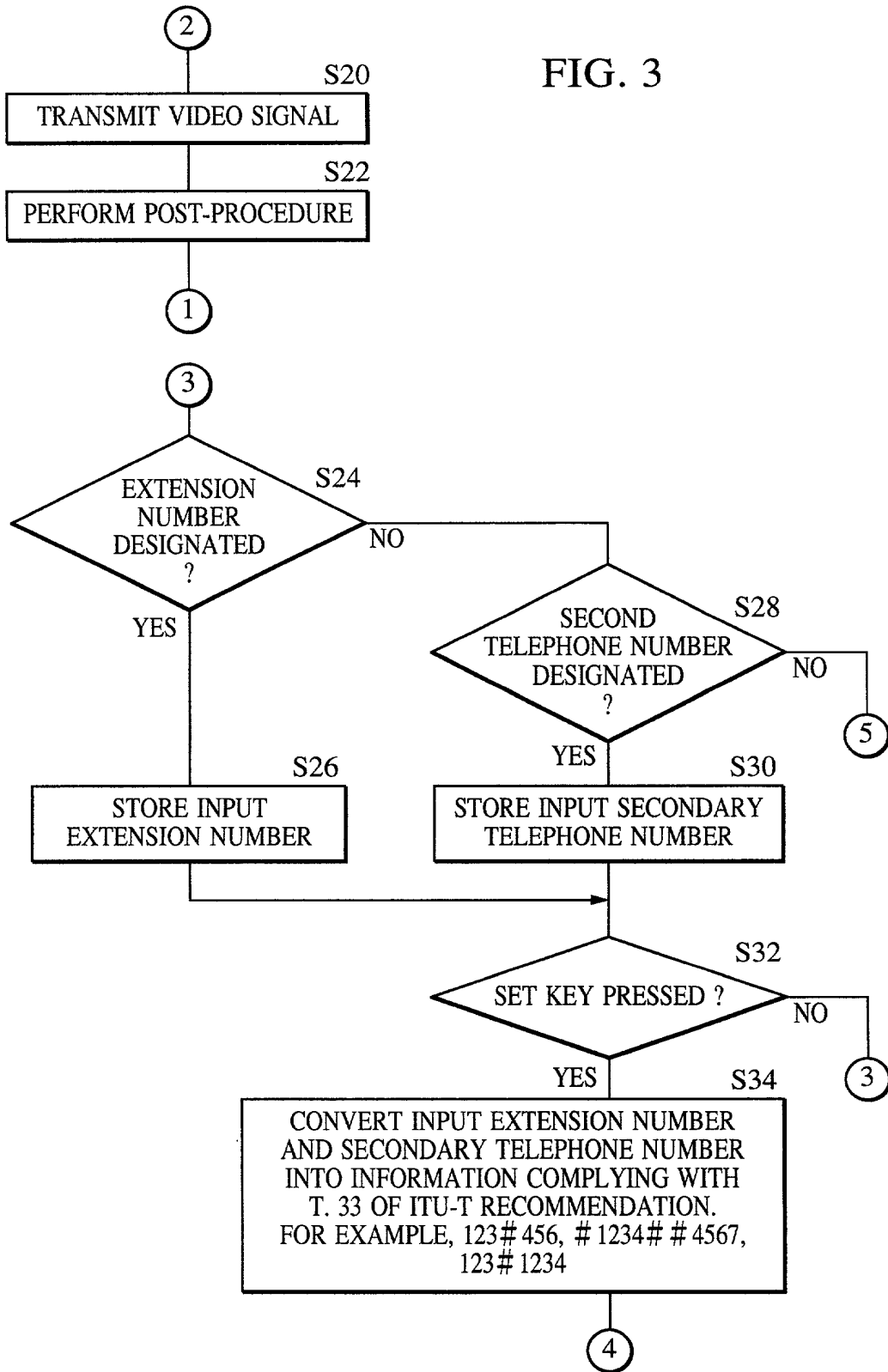


FIG. 4

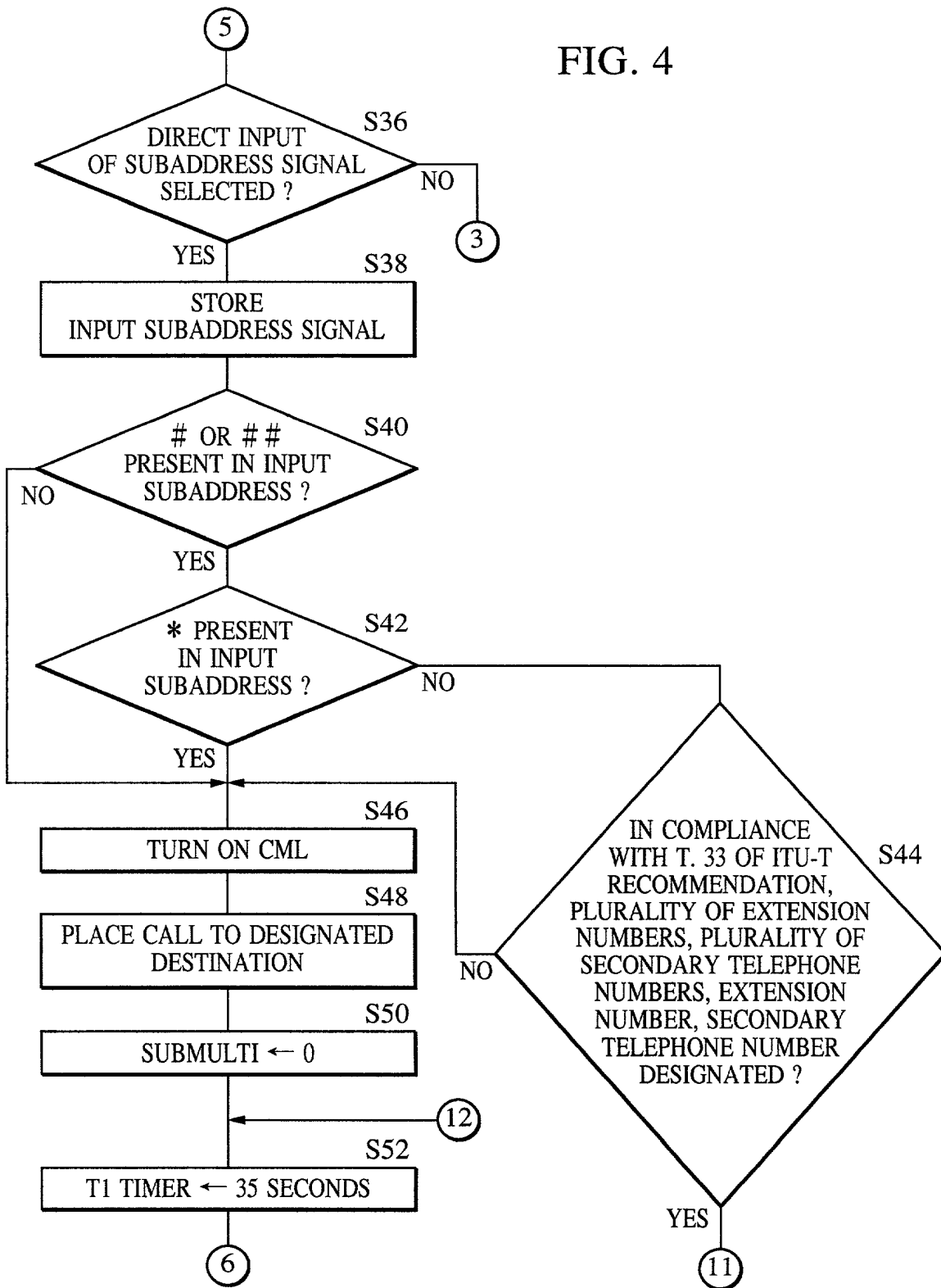


FIG. 5

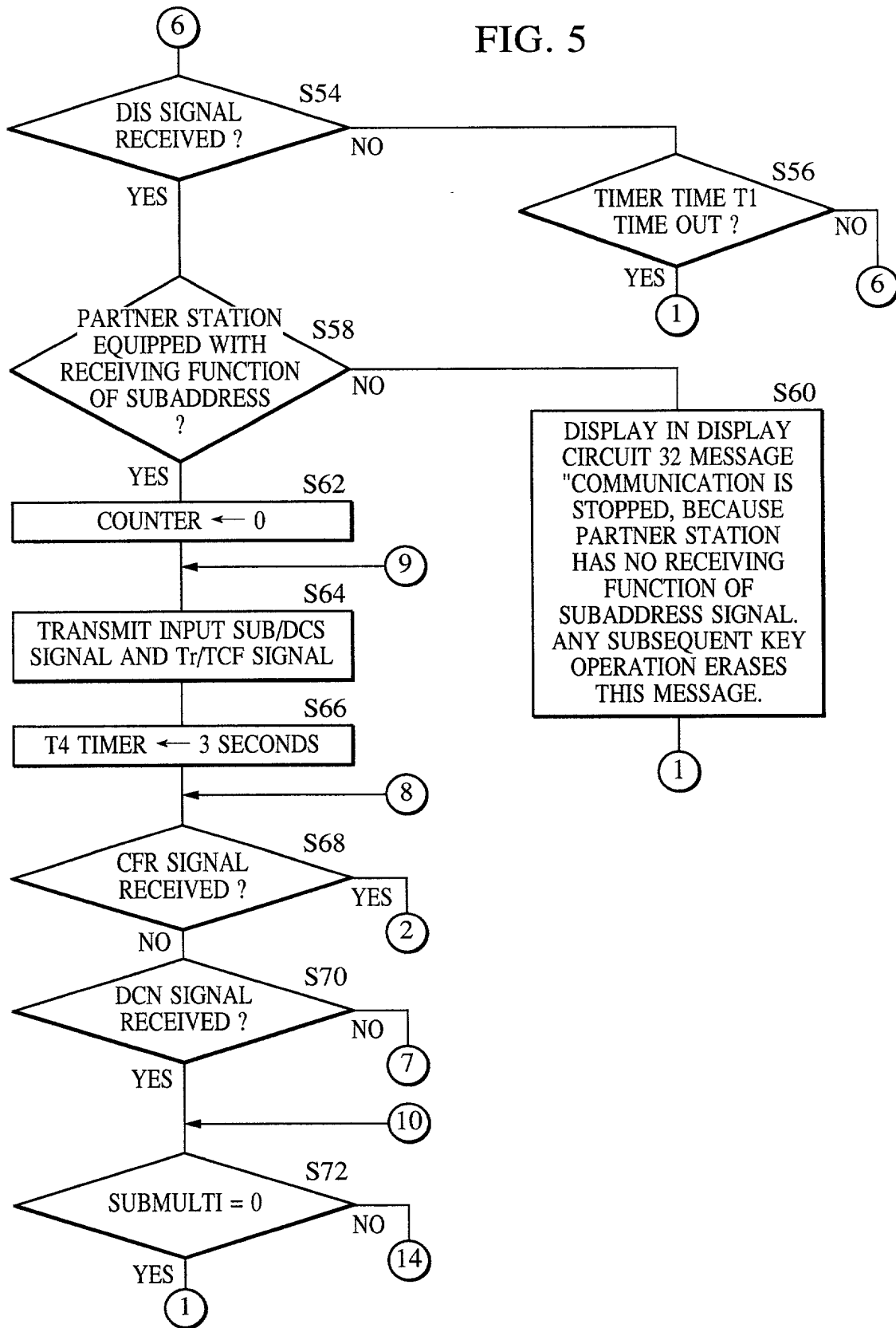
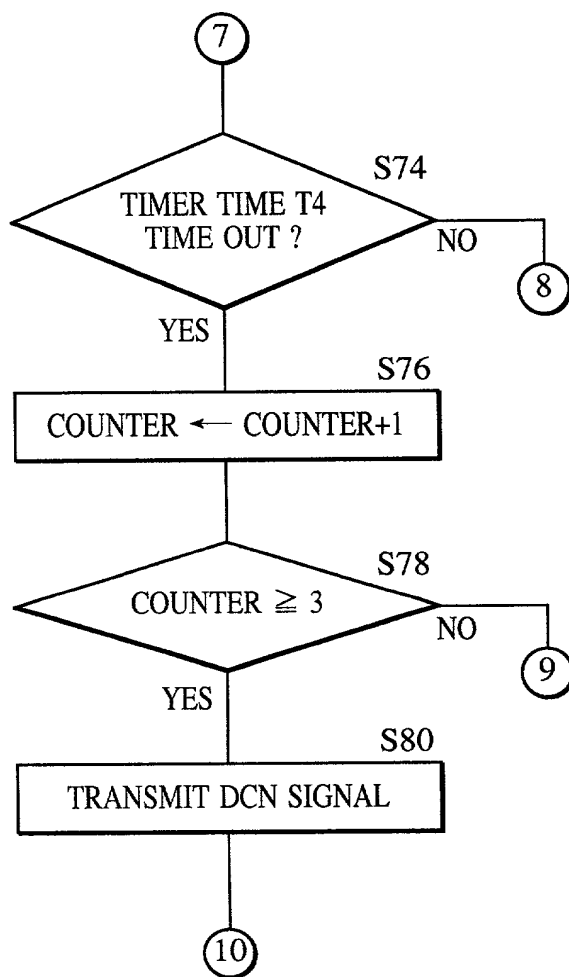
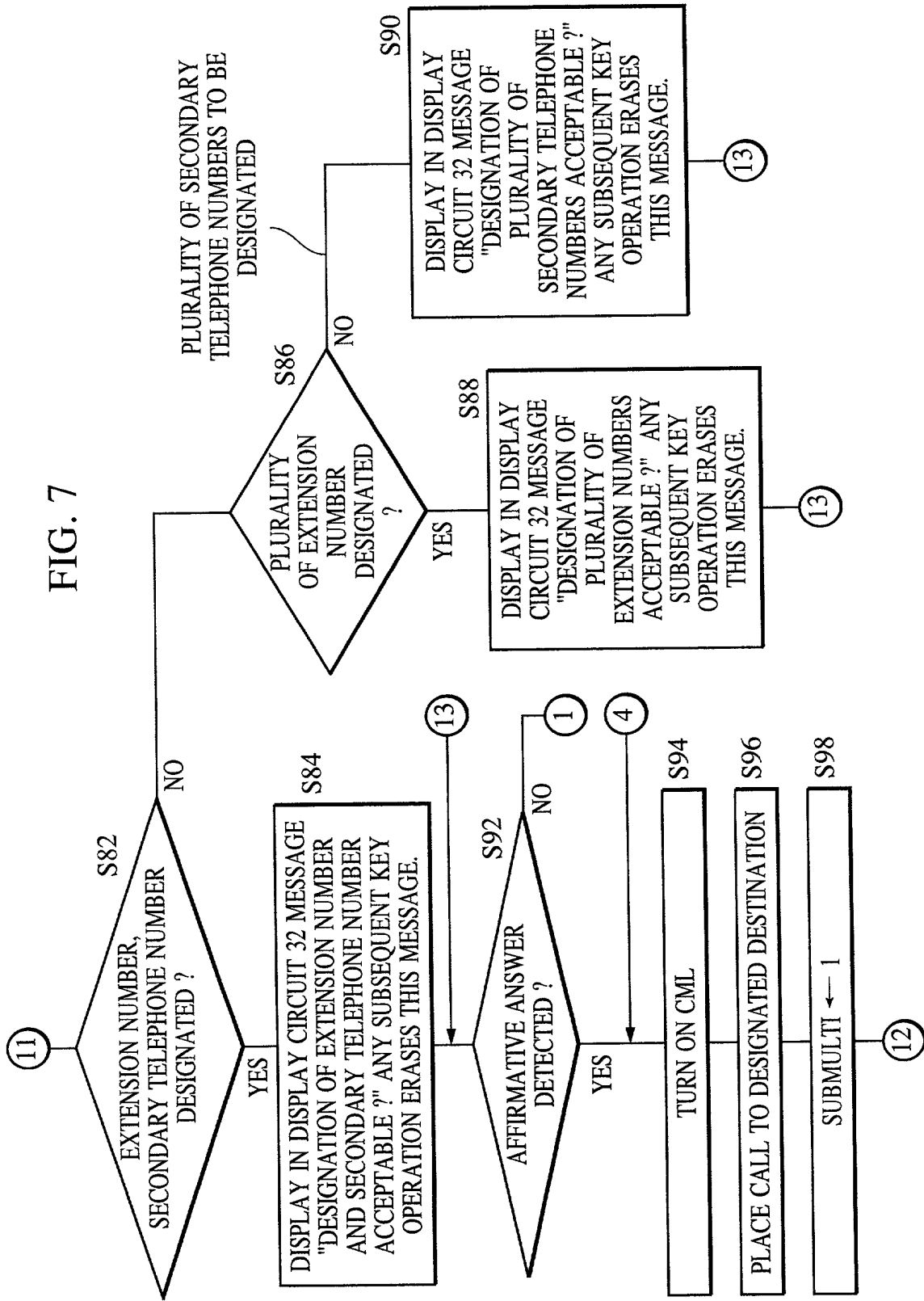
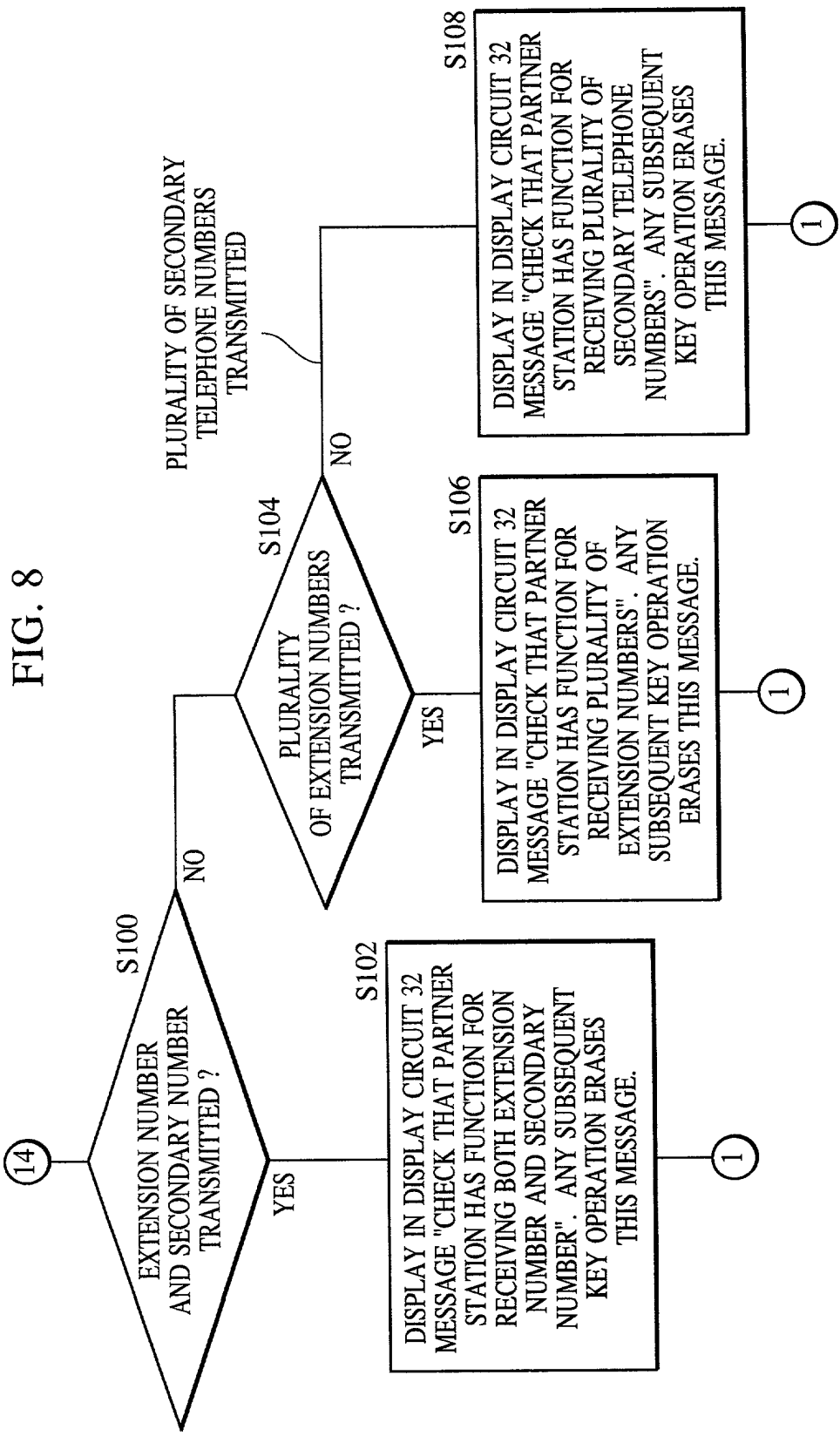


FIG. 6

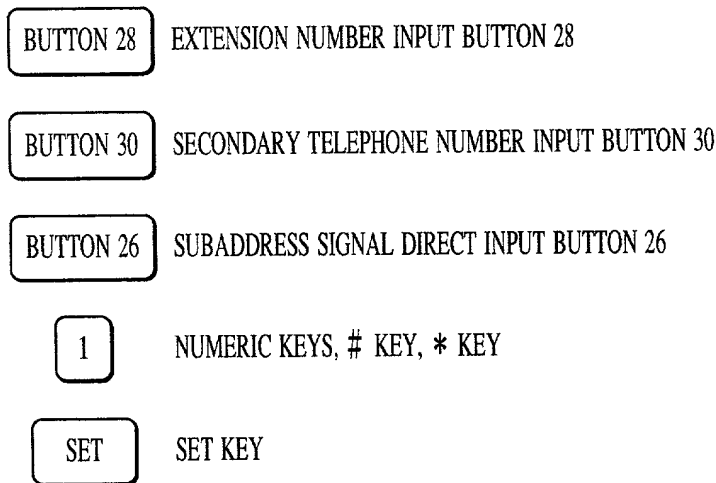








## FIG. 9A



## FIG. 9B

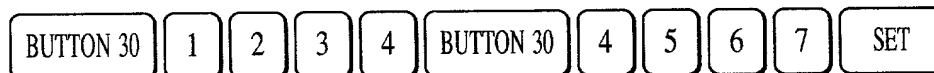
USER KEYSTROKE SEQUENCE FOR INPUT OF PLURALITY OF EXTENSION NUMBERS



FIF CONTENT OF SUBADDRESS 123#456

## FIG. 9C

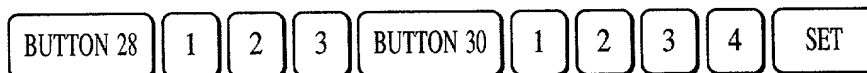
USER KEYSTROKE SEQUENCE FOR INPUT OF PLURALITY OF SECONDARY TELEPHONE NUMBERS



FIF CONTENT OF SUBADDRESS #1234# #4567

## FIG. 9D

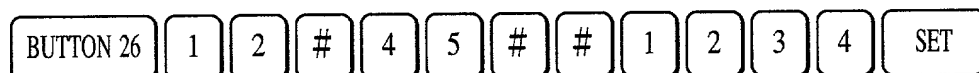
USER KEYSTROKE SEQUENCE FOR INPUT OF EXTENSION NUMBER AND SECONDARY TELEPHONE NUMBER



FIF CONTENT OF SUBADDRESS 123# #1234

## FIG. 9E

USER KEYSTROKE SEQUENCE FOR DIRECT INPUT OF SUBADDRESS SIGNAL



FIF CONTENT OF SUBADDRESS 12#45# #1234

FIG. 10

